



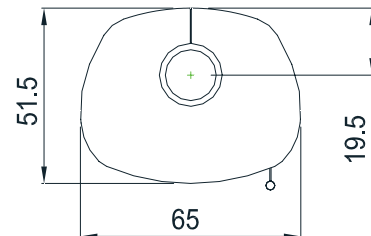
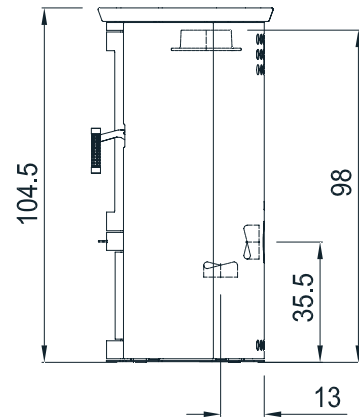
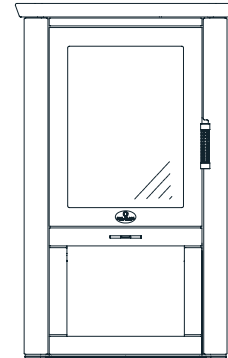
RIO S Steel / Stone / Ceramic

MAX BLANK
HIGH QUALITY

**wood or pellet
without electricity**

Technical specifications of the accumulation heater:

measurements (cm)	width	height	depth
stove	65	104,5 / (103)	51,5
combustion chamber	37	30	29
fire glass	34	47,5	
fire door	45	58,5	
flue pipe connection Ø 15 to → or ↑ height to top pipe socket			98
outside air connection Ø 10 to → or ↓ height to mid connection horizontal			35,5
depth to mid connection vertical			13
total weight	chamotte bricks	heat accumulator	
184 / 253 / (206) kg	26 kg	-	
data for	pellet box S	pellet box XL	wood
nominal heat output	7,5 kW	11 kW	6,5 kW
output range	7,5 - 5 kW	11 - 8,5 kW	6,5 - 3,3 kW
efficiency	86%	85%	87%
heating capability*	50 - 150 m³	70 - 250 m³	70 - 250 m³
amount of fuel	3,8 kg	7,5 kg	2,9 kg / h
fire duration	up to 2,5 h	up to 5 h	up to 5 h
heat release	up to 10 h	up to 13 h	up to 12 h
flue gas flow volume	8,97 g/s	10,74 g/s	10,3 g/s
exhaust °C (nozzle)	180 °C	230 °C	268 °C
min/max feed press.	12 / 15 Pa	13 / 15 Pa	12 / 15 Pa
CO (13%/O2) [mg/m³]	1166	880	1074
CO (13%/O2) [%]	0,093	0,070	0,086
dust (13%/O2) [mg/m³]	36	30	31
NOx (13%/O2) [mg/m³]	109	110	115
CxHy (13%/O2) [mg/m³]	54	41	51
wall distance, rear	15 cm	20 cm	15 cm
wall distance, side	15 cm	15 cm	15 cm
distance to the front	80 cm	80 cm	80 cm



Fulfills the latest standards in burning wood, wood-briquettes and pellets (please see applicable standards).

Please check the instruction manual for this wood & pellet burning stove.

Suitable for multiple chimneys.

values in (..) are for ceramic covers

* depending on stove location in the living area, room isolation, height of the room and amount of fuel

Subject to alterations; errors including printer's errors.

Our specialised stove builders and retailers will assist you with practical advice.

Heat storing stove, model Rio S

ENR	model	delivery time	
	Rio S Keramik <ul style="list-style-type: none"> • steel stove body anthracite • side elements and lid made of full-heat-accumulating-ceramic		
175-2013	chamois ↑	4	
175-2004	almond-beige ↑	4	
175-2012	bengal-red ↑	4	
	customer request		
175-2099	further combinations of the above colour range of your choice: a) your choice of colour for the lid b) your choice of colour for the side elements available with lid in chestnut-brown and anthracite, e.g. sides in almond-beige, and so on!	4	
	Rio S Stone <ul style="list-style-type: none"> • steel stove body anthracite • massive side elements and lid 		
175-2002	natural stone grey chiselled ↑	3	
175-2069	natural stone light grey blasted	4	
175-2048	natural stone chiselled grey ↑	4	
175-2047	sandstone clouded ↑	3	
175-2072	natural stone black smooth ↑	4	
	Rio S Steel <ul style="list-style-type: none"> • steel stove body anthracite • lid in ceramic 		
175-2017	chamois ↑	4	
175-2003	almond-beige ↑	4	
175-2022	chestnut-brown ↑	4	
175-2001	bengal-red ↑	4	
175-2028	anthracite ↑	4	
	• lid in natural stone		
175-2006	grey chiselled ↑	4	
175-2079	grey blasted ↑	4	
175-2050	creame smooth ↑	4	
175-2049	sandstone clouded ↑	4	
175-2082	black smooth ↑	4	
pellet accessories for the heat storing stove			
552-2014	pellet box S with 7,5 kW (at purchase with a stove) pellet box S with 7,5 kW (retrofit kit)		
552-2004	pellet box XL with 11 kW (at purchase with a stove) pellet box XL with 11 kW (retrofit kit) <ul style="list-style-type: none"> • from heat-resistant stainless steel • at model S with 2, at XL with 3 black ceramic special glasses • with lighter, silicone gloves, pellet-felt bag up to 20 kg, cleaning brushes, pellet shovel provided 		
29 175 311	floor protector stainless steel (see accessories)		
29 175 400	floor protector glass (see accessories)		
309 080	drawer for wood Be sure to specify when ordering. outside air connection horizontal or vertical (is included in scope of delivery) for other connection accessories please see list of accessories		
special features of the heat accumulating stove, model Rio S			
Heat without electrical power and use all advantages of this double feature oven: pellet and wood. <ul style="list-style-type: none"> • model with distinctive heat accumulation and heat radiation capability because of its massive full ceramic or heat-accumulating stone. 			